

## UK SLAUGHTER STATISTICS

The latest National Statistics produced by Defra on UK slaughterings of cattle, sheep and pigs were released on 21 July 2011 according to the arrangements approved by the UK Statistics Authority.

This monthly notice will be updated at 09:30 on 25 August 2011.

### Contents

Section 1	UK slaughter numbers	page 2
Section 2	UK average dressed carcass weights	page 2
Section 3	UK home-killed meat production	page 3
Section 4	UK average weekly slaughter estimates	page 3 to 4
Section 5	UK slaughterings by country	page 5
Section 6	Methodology, notes and revisions policy	page 6

### Key points

This release shows the latest monthly information on the slaughtering of cattle, sheep and pigs. It also includes dressed carcass weight and meat production information. The key results for **June 2011** are given below:

- **Cattle:** UK prime cattle slaughterings were 1 per cent higher than in June 2010 at 163 thousand head. Beef and veal production was 72 thousand tonnes, 6 per cent higher than in June 2010.
- **Sheep:** UK clean sheep slaughterings were 10 per cent higher than in June 2010 at 840 thousand head. Mutton and lamb production was 20 thousand tonnes, 9 per cent higher than in June 2010.
- **Pigs:** UK clean pig slaughterings were 9 per cent higher than in June 2010 at 744 thousand head. Pigmear production was 60 thousand tonnes, a rise of 9 per cent on June 2010.

This notice and additional tables providing longer term trends of slaughterings, meat production and supplies are available to download at: <http://www.defra.gov.uk/statistics/foodfarm/food/slaughter/>

---

**Enquiries to:** Sarah Thompson, Department for Environment, Food and Rural Affairs, Room 309, Foss House, Kings Pool, 1 - 2 Peasholme Green, York YO1 7PX. Tel: ++ 44 (0)1904 455097, email:sarah.thompson@defra.gsi.gov.uk

**A National Statistics publication.** National Statistics are produced to high professional standards. They undergo regular quality assurance reviews to ensure that they meet customer needs. They are produced free from any political interference. For general enquiries about National Statistics, contact the National Statistics Public Enquiry Service: tel. 0845 601 3034 email [info@statistics.gov.uk](mailto:info@statistics.gov.uk). You can also find National Statistics on the internet at [www.statistics.gov.uk](http://www.statistics.gov.uk).

---

## Section 1: UK monthly slaughter estimates

This table shows monthly estimates of the number of cattle, sheep and pigs slaughtered for meat for human consumption in the United Kingdom. The survey is run according to statistical, rather than calendar months, the number of weeks in the statistical month is specified below.

**Table 1: UK monthly slaughter estimates** Thousand Head

United Kingdom	April 2011 5 weeks	May 2011 4 weeks	June 2011 4 weeks
Steers	100	79	74
Heifers	76	62	58
Young Bulls	28	29	32
Cows and Adult Bulls	48	46	49
Calves	8	6	5
Other Sheep and Lambs	961	722	840
Ewes and Rams	172	137	141
Clean Pigs	891	719	744
Sows and Boars	*	*	*

\* Data are confidential

## Section 2: UK average dressed carcass weights

This table shows the monthly average dressed carcass weight of livestock slaughtered for meat for human consumption in the United Kingdom. Longer term trends can be found on the Defra website at

**Table 2: UK average dressed carcass weights** Kilogramme

United Kingdom	April 2011	May 2011	June 2011
Steers	367.3	368.0	365.9
Heifers	320.9	319.6	317.8
Young Bulls	340.1	344.6	350.2
Cows and Adult Bulls	321.6	321.0	321.4
Calves	42.5	42.4	51.3
Other Sheep and Lambs	19.4	19.0	19.0
Ewes and Rams	26.6	26.5	26.3
Clean Pigs	77.5	77.6	77.5
Sows and Boars	151.1	154.4	148.4

### Section 3: UK monthly home-killed production of meat

This table shows the monthly volumes of meat produced in the United Kingdom. Data is shown according to statistical, rather than calendar months, number of weeks in statistical month as specified.

**Table 3: UK monthly home-killed production of meat**

Thousand Tonnes

United Kingdom	April 2011 5 weeks	May 2011 4 weeks	June 2011 4 weeks
Beef	86	74	72
Mutton and Lamb	23	17	20
Pigmeat	73	59	60

### Section 4: UK average weekly slaughterings

This following table shows the average weekly slaughter figures for the last thirteen months. The monthly slaughter figures in section one are affected by the number of weeks in the statistical month. To get a clearer measure of trends weekly averages are calculated by dividing the number of livestock slaughtered each month by the number of weeks in the statistical month.

Longer term trends can be seen in the charts following this table.

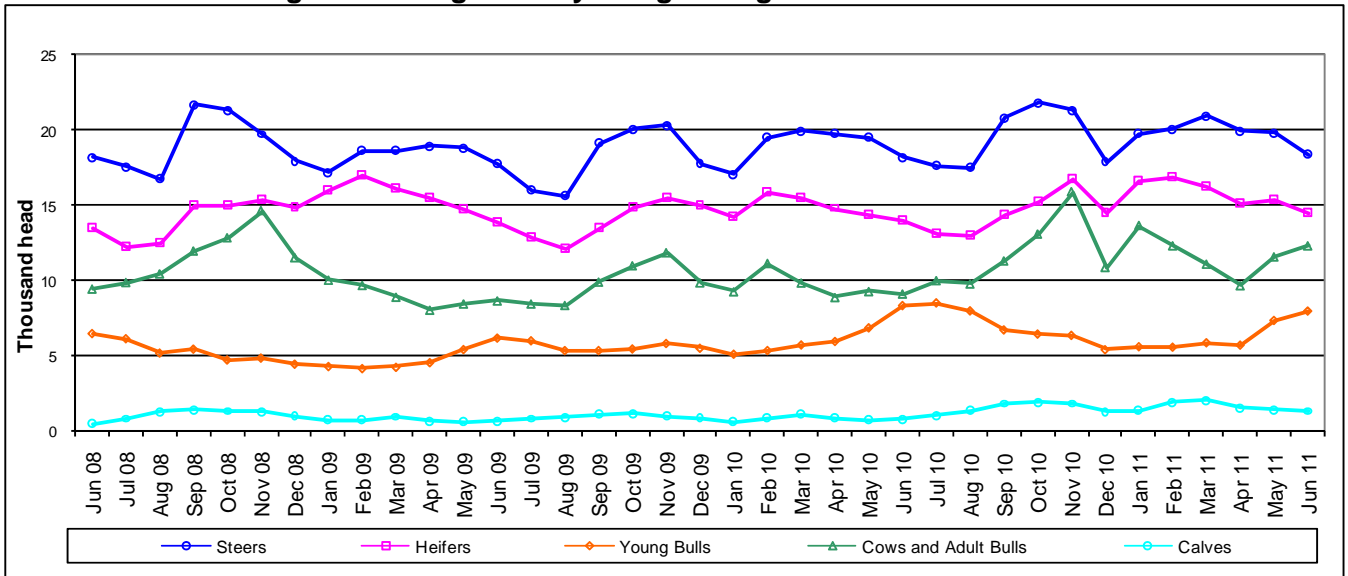
**Table 4: UK average weekly slaughterings**

Thousand Head

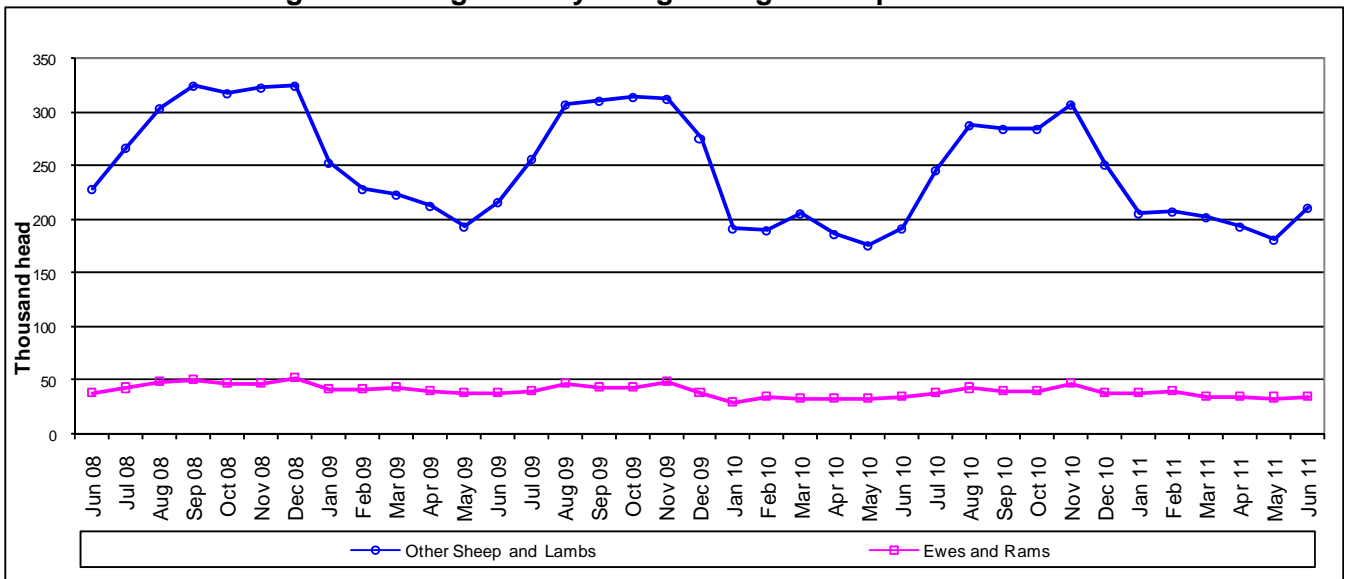
United Kingdom	2010					2011							
	Jun	Jul	Aug	Sep	Oct	Nov	Dec	Jan	Feb	Mar	Apr	May	Jun
Steers	18	18	18	21	22	21	18	20	20	21	20	20	18
Heifers	14	13	13	14	15	17	15	17	17	16	15	15	14
Young Bulls	8	8	8	7	6	6	5	6	6	6	6	7	8
Cows and Adult Bulls	9	10	10	11	13	16	11	14	12	11	10	12	12
Calves	1	1	1	2	2	2	1	1	2	2	2	1	1
Other Sheep and Lambs	191	245	287	283	284	306	251	205	207	202	192	181	210
Ewes and Rams	35	38	43	41	41	47	39	39	40	35	34	34	35
Clean Pigs	171	171	181	184	190	197	179	181	192	191	178	180	186
Sows and Boars	4	*	*	*	*	*	*	*	*	*	*	*	*

\* Data are confidential

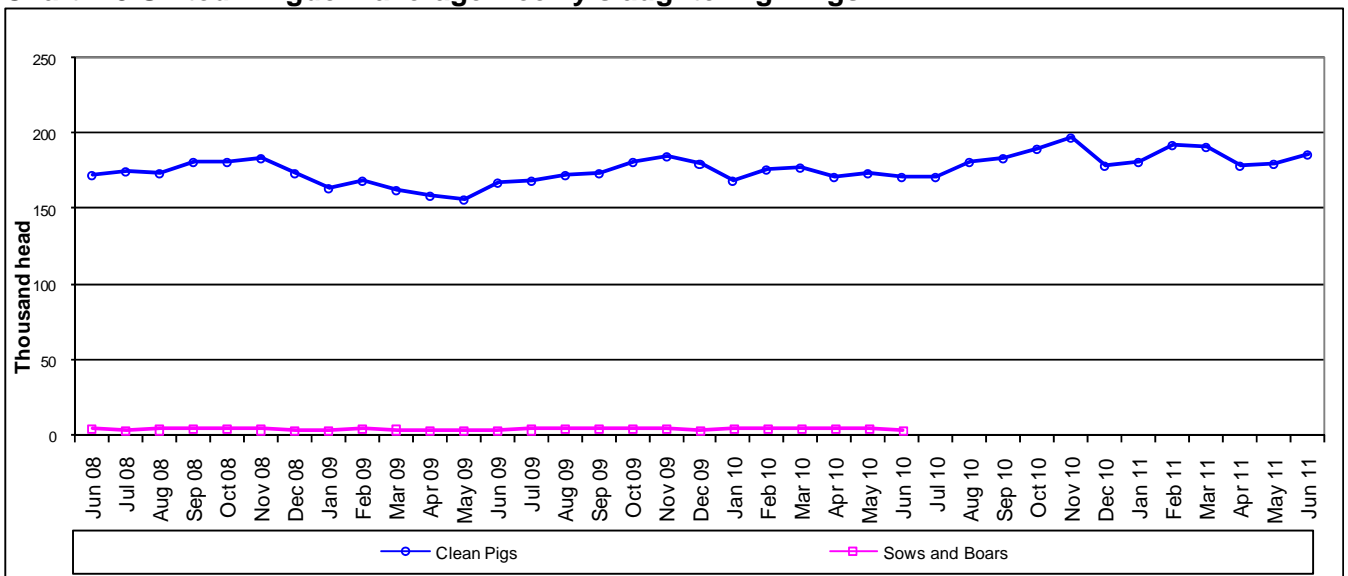
**Chart 4:1 United Kingdom average weekly slaughtering – Cattle**



**Chart 4:2 United Kingdom average weekly slaughtering – Sheep**



**Chart 4:3 United Kingdom average weekly slaughtering - Pigs**



## Section 5: UK slaughterings by country

This table shows monthly estimates of the number of cattle, sheep and pigs slaughtered for meat in England and Wales, Scotland, Great Britain and Northern Ireland. Data are shown in statistical months, rather than calendar months. The totals for the countries may not add up to the Great Britain totals or the United Kingdom totals in section one, due to rounding.

**Table 5: UK slaughterings by country**

Thousand Head

	April 2011 5 weeks	May 2011 4 weeks	June 2011 4 weeks
<b>England &amp; Wales</b>			
Steers	62	49	46
Heifers	46	38	36
Young Bulls	19	19	21
Cows and Adult Bulls	37	35	36
Calves	7	5	5
Other Sheep and Lambs	828	657	747
Ewes and Rams	167	133	136
Clean Pigs	688	552	571
Sows and Boars	*	*	*
<b>Scotland</b>			
Steers	23	19	17
Heifers	18	14	13
Young Bulls	4	4	5
Cows and Adult Bulls	5	5	5
Calves	0	0	0
Other Sheep and Lambs	118	49	72
Ewes and Rams	2	2	2
Clean Pigs	60	45	45
Sows and Boars	0	0	0
<b>Great Britain</b>			
Steers	85	68	63
Heifers	64	52	49
Young Bulls	23	23	26
Cows and Adult Bulls	41	40	41
Calves	7	5	5
Other Sheep and Lambs	946	706	819
Ewes and Rams	169	135	139
Clean Pigs	748	597	617
Sows and Boars	*	*	*
<b>Northern Ireland</b>			
Steers	15	11	10
Heifers	12	10	8
Young Bulls	5	6	6
Cows and Adult Bulls	7	7	8
Calves	0	0	0
Other Sheep and Lambs	15	17	21
Ewes and Rams	3	3	2
Clean Pigs	143	122	127
Sows and Boars	0	0	0

\* Data are confidential

## Section 6: Methodology, Notes and Revisions Policy

1. The information in this notice is used by the UK government and the EU as evidence for assessing market conditions and evaluating agricultural policy. The slaughter statistics are also required by the EU under Regulation (EC) No 1165/2008. Other users include the food and farming industry, academia and the general public. Contact details are available on the front page of this notice, for you to send feedback or ask questions about the information provided.
2. Defra runs a monthly survey of registered England and Wales slaughterhouses. It is a statutory survey of 109 respondents that collects information on livestock slaughter numbers and weight of meat produced. All major slaughterhouses participate in the survey and the response rate is typically 100%. These data are supplemented by administrative data for smaller slaughterhouses. Similar surveys are run by RERAD in Scotland and by DARD in Northern Ireland. The England and Wales slaughter survey accounts for around 90% of the E&W slaughterhouse throughput for each livestock type.
3. Information on the weight of meat produced from a sample of animals weighed at slaughterhouses is obtained from survey respondents, around 55 slaughterhouse respondents. From the information provided average dressed carcass weights for each animal type are primarily calculated by adding up the total weight of the meat produced and dividing by the number of animals weighed. Cold dressed carcass weights are recorded.
4. The volume of meat production is estimated from the number of all livestock slaughtered and average dressed carcass weight information collected. Home killed production includes livestock imported into the United Kingdom for slaughter.
5. The data are subject to a variety of validation checks which identify inconsistencies in the data. All data are cleaned prior to publication in discussion with the survey respondents.

### Revisions Policy

6. Figures in this notice are provisional and subject to revision. We will provide information about any revisions we make to previously published information in this statistics notice and the associated datasets. Revisions could occur for various reasons, including:
  - a. if we have not received survey data from respondents we make an estimate based on their previous returns. These estimates will be replaced with actual survey data when it is received.
  - b. survey respondents occasionally supply amended figures for previous periods.
  - c. if we have not received administrative data for the smaller slaughterhouses we make an estimate based on previous data received. These estimates will be replaced with actual data when it is received.
7. **This month revisions have been made to the data from May 2011 onwards.**